

Bloom's Taxonomy Aligned Activities

Create

create design develop
invent formulate generate

Evaluate

evaluate defend judge assess
hypothesize compare conclude

Analyze

analyze breakdown experiment
model examine reverse-engineer

Apply

solve employ compute modify
operate predict demonstrate

Understand

describe explain infer
give examples discuss
summarize translate

Remember

memorize list
recognize label
identify find

Bloom's Taxonomy



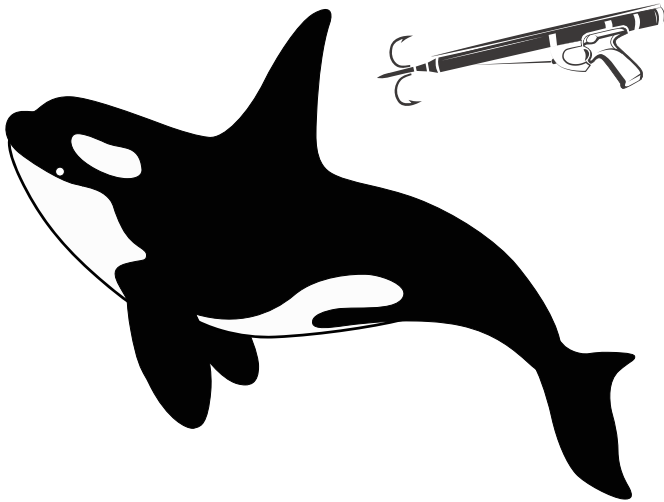


Key Vocabulary

For each of the words below, carefully read through the definition and draw a visual.

Word: Whaling

Whaling is the hunting of whales for their usable products such as meat and blubber, which can be turned into a type of oil that became increasingly important in the Industrial Revolution.



Word: Cetaceans

Aquatic mostly marine mammals that includes the whales, dolphins, porpoises, and related forms and that have a torpedo-shaped nearly hairless body, paddle-shaped forelimbs but no hind limbs, one or two nares opening externally at the top of the head, and a horizontally flattened tail used for locomotion

Word: Flense

To forcefully strip off the blubber or skin from a whale, seal, etc. A blubber spade, which is made from iron, has been used during the flensing process.

Word: Extinction

Extinction occurs when species are diminished because of environmental forces (habitat fragmentation, global change, natural disaster, overexploitation of species for human use) or because of evolutionary changes in their members.

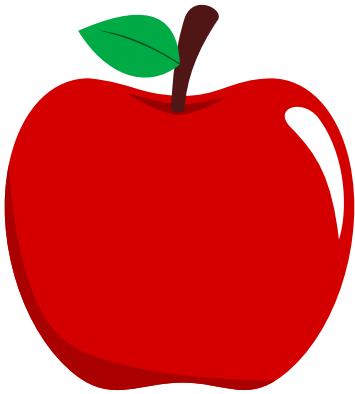
Summarize



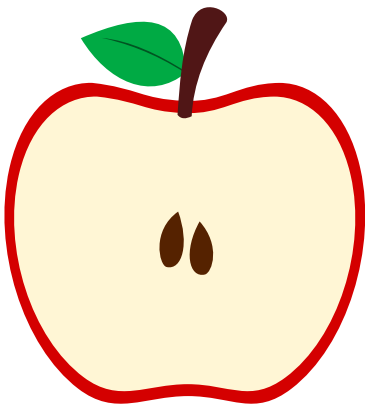
Reduce It!

Summarize the movie In 4 minutes, then switch with a partner and have them reduce your summary In 2 minutes. Finally, switch one last time with another partner and select the 3 most Important words related to the film.

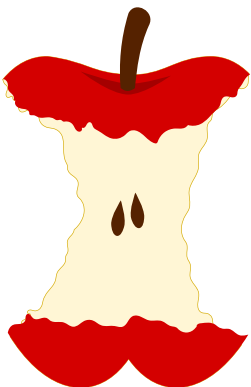
SUMMARY



REDUCE IT!



3 KEY WORDS



Determine

Dr. Roger Payne

After watching the film, complete this character graphic organizer with a partner. Determine key Information!



Says

Empty box for notes under 'Says'

Thinks

Empty box for notes under 'Thinks'

Feels

Empty box for notes under 'Feels'

Believes

Empty box for notes under 'Believes'

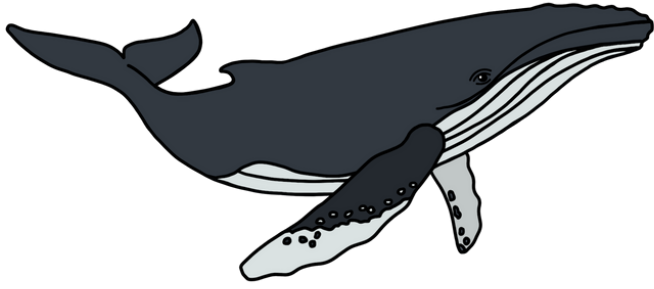
Comes From

Empty box for notes under 'Comes From'

Travels to

Empty box for notes under 'Travels to'

Analyze



For this activity, you will be asked to analyze the various charts related to the whaling Industry. Remember to use key evidence to support your answers. You can work with a partner or you can work alone.

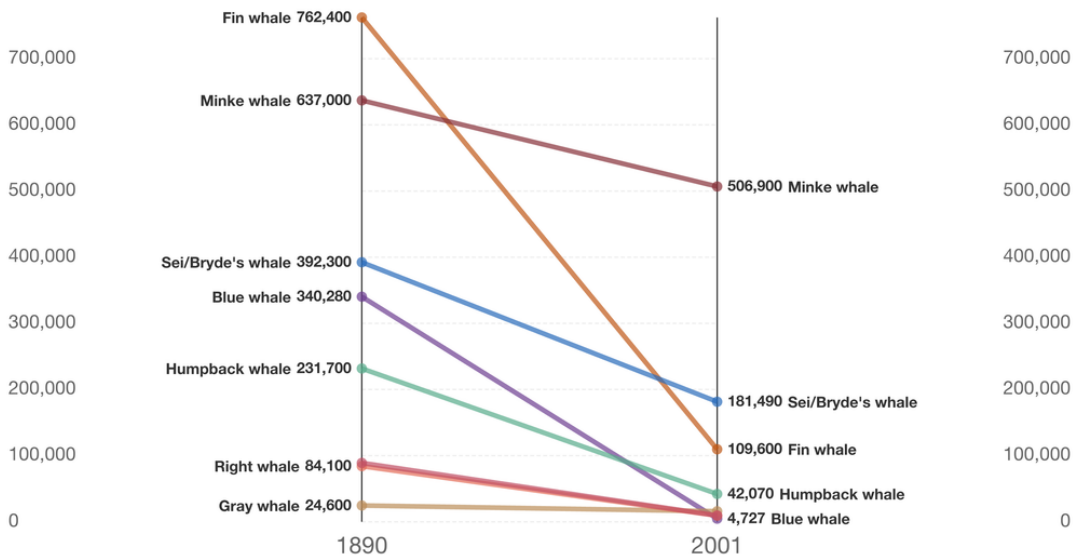
1

Whaling has led to a severe decline in whale populations worldwide. Many whale species were hunted to near extinction, including the blue whale, fin whale, and humpback whale. This depletion disrupted the natural balance of marine ecosystems. Analyze the chart below and answer the questions.

The decline of global whale populations

Shown are estimates of global whale populations in pre-whaling periods versus the year 2001.

Our World
in Data



Source: Pershing et al. (2010); Christensen (2006)

OurWorldInData.org/biodiversity • CC BY

Note: Estimates – particularly for the distant past – are crude, and come with significant uncertainty. Pre-whaling dates depend on the whale species and region (most are in the late 19th and early 20th century) but have all been coded as the year 1890 for consistency.

1. Which whale's population has declined the most since 1890?

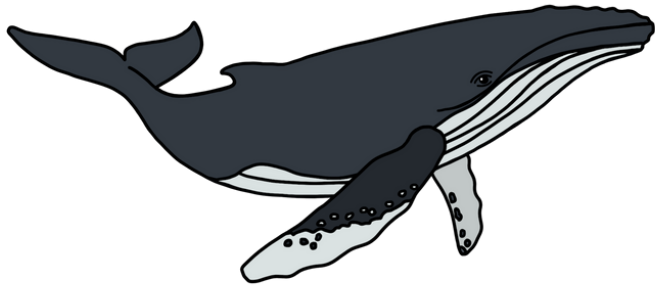
2. Based on the numbers above, which whale is closest to extinction?

3. Approximately, how many total whales were there in 1890?

4. How many total whales were there in 2001?

5. What conclusions can be drawn from this data? Write at least two.

Analyze



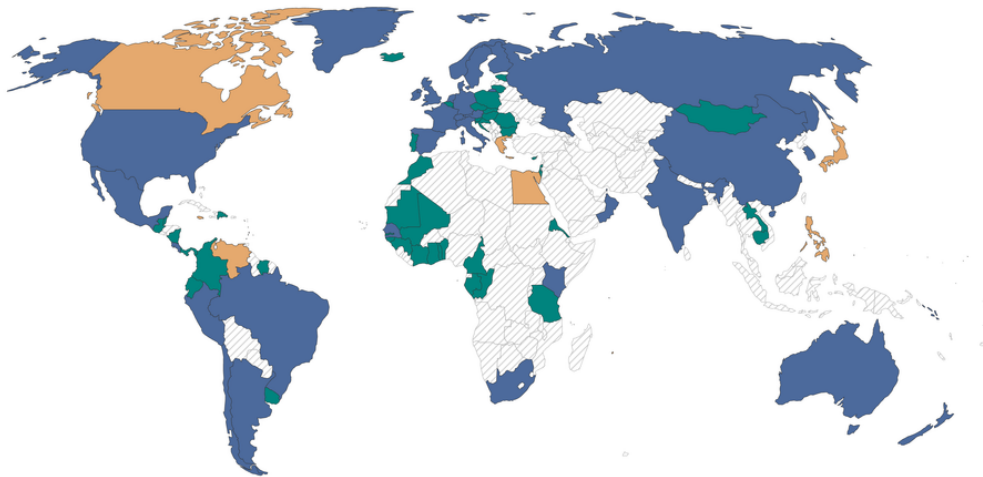
For this activity, you will be asked to analyze the various charts related to the whaling Industry. Remember to use key evidence to support your answers. You can work with a partner or you can work alone.

2

The International Whaling Commission (IWC), formed in 1946 with the goal of conserving whale populations and regulating the whaling industry. The IWC is composed of member countries. Analyze the map below to answer the questions.

Status of membership in the International Whaling Commission

The International Whaling Commission (IWC) was set up to preserve global whale stocks through catch quotas, regulation of hunting methods and designation of specific hunting areas.



■ Former member ■ Joined in 20th century ■ Joined in 21st century ▨ Never a member

Source: International Whaling Commission (IWC; 2022)

OurWorldInData.org/biodiversity • CC BY

1. List two Asian countries that are members of the IWC.

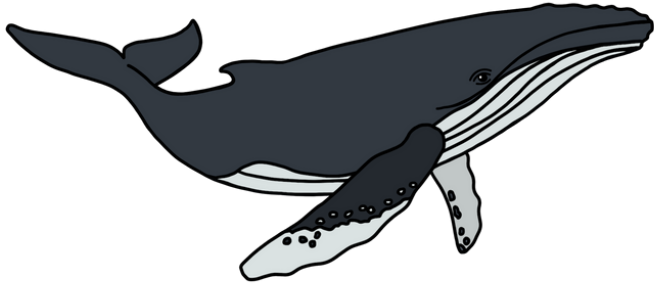
2. List three countries that have withdrawn as members of the IWC.

3. Which continent has the least amount of members?

4. List three countries that have never been part of the IWC.

5. List three countries that have joined the IWC during the 21st century.

Analyze



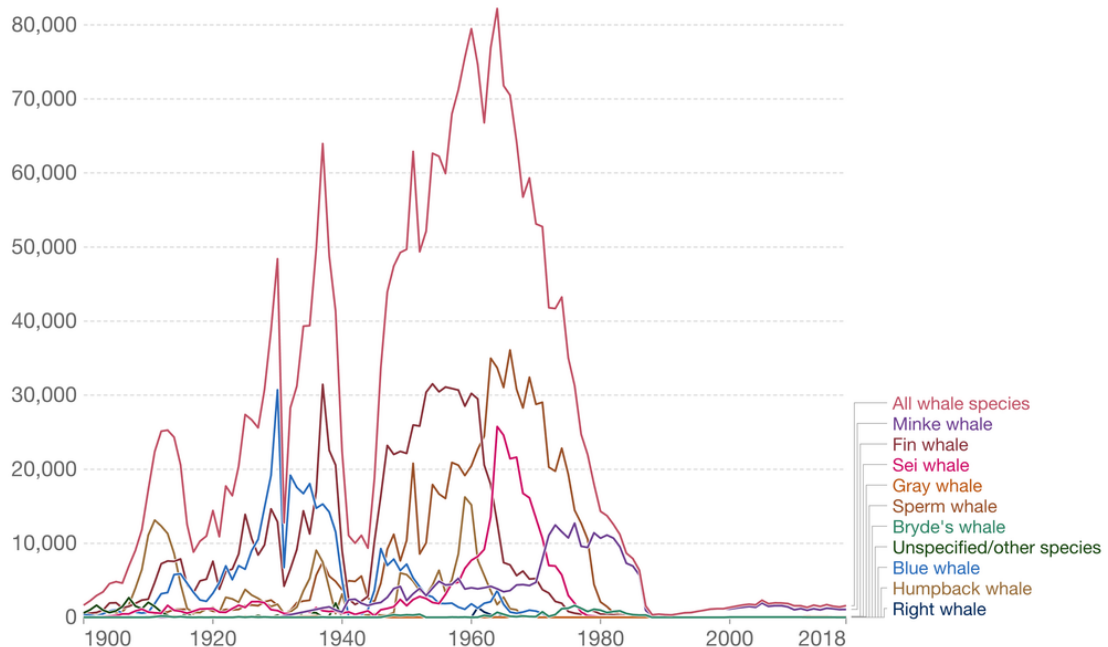
For this activity, you will be asked to analyze the various charts related to the whaling Industry. Remember to use key evidence to support your answers. You can work with a partner or you can work alone.

3

The International Whaling Commission (IWC), formed In 1946 with the goal of conserving whale populations and regulating the whaling Industry. Analyze the graph below to answer the questions.

Number of whales killed, World

Our World
in Data



Source: International Whaling Commission (IWC); Rocha et al. (2014)

OurWorldInData.org/biodiversity • CC BY

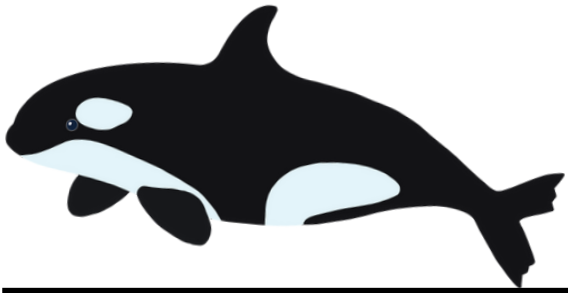
1. The IWC was formed In 1946. What Impact did Its formation have on the number of whales killed?

2. A moratorium on whaling was put In place during the 1980s. What was Its Impact?

3. True or False: The moratorium on whaling has stopped whales from being killed.

4. Approximately what year did the whaling Industry kill the most amount of whales?

Judge: **Teacher KEY**



Why is Japan leaving the IWC? In this section you will read the arguments and make a judgement on their validity. For each argument, write your own response in support or against it. You judge!



The Japanese government argued that for 30 years It had tried to find an amicable solution with other IWC members, but catch quotas were often not discussed In good faith.



Japan argued that the moratorium on whaling could Impact other Japanese fishing industries, and that the moratorium was not In the long-term Interest of the Japanese fishing Industry.



The Japanese fishing companies had not made a profit for years through whaling and never received compensation from the state. Many small-type whalers began engaging In unregulated whaling for consumption In home villages.



Japanese bureaucrats argue that foreign activists object to the Japanese whaling Industry because they are anti-Japanese. Most documentaries portray the conflict only from the activists' point of view.



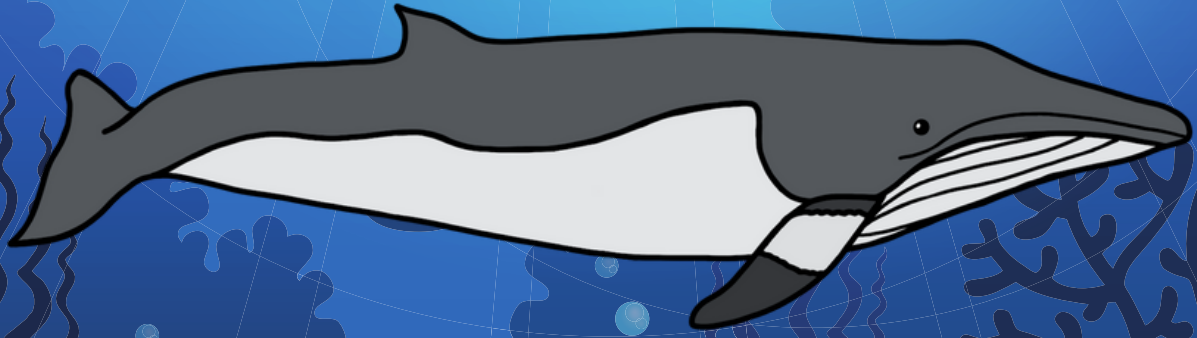
Design a Children's Book

Throughout the film, we saw the producers interview dozens of children about their knowledge regarding whales. Today, you are tasked with illustrating and writing a short-story to help young children to understand the threats facing whales worldwide (the storyboard has 6 scenes in total). In this story you must simplify the Issues of whaling, extinction, and the IWC.

Grading Rubric

CRITERIA	4	3	2	1
Storyboard Layout	The storyboard is exceptionally well-organized and visually appealing. Each panel clearly depicts the key scenes and transitions related to whales. The layout effectively guides the viewer through the story.	The storyboard is well-organized and visually clear. Most panels effectively depict the key scenes and transitions related to whales. The layout provides a clear progression of the story.	The storyboard is somewhat organized and visually clear. Some panels adequately depict the key scenes and transitions related to whales. The layout occasionally interrupts the flow of the story.	The storyboard lacks organization and visual clarity. Panels do not effectively depict the key scenes and transitions related to whales. The layout disrupts the flow of the story.
Whale Information	The storyboard includes accurate and detailed information about whales, such as their species, behaviors, habitats, and importance to the ecosystem related to the film "A Life Among Whales."	The storyboard includes sufficient and accurate information about whales, covering their species, behaviors, habitats, and importance to the ecosystem related to the film "A Life Among Whales."	The storyboard includes basic information about whales, but some details may be missing or inaccurate. The information is somewhat presented, but gaps in understanding may arise.	The storyboard lacks accurate and sufficient information about whales. The information is unclear or misleading, making it difficult to understand the importance of whales.
Visual Elements	The visual elements (drawings, illustrations, or images) in the storyboard are highly detailed, creative, and accurately depict whales. The visuals effectively convey the characteristics, appearance, and behaviors of different whale species.	The visual elements in the storyboard are visually appealing and mostly depict whales accurately. They convey the characteristics, appearance, and behaviors of different whale species satisfactorily.	The visual elements in the storyboard are somewhat detailed and adequately depict whales. They generally convey the characteristics, appearance, and behaviors of different whale species.	The visual elements in the storyboard lack detail and do not accurately depict whales. They fail to convey the characteristics, appearance, and behaviors of different whale species effectively.
Creativity	The storyboard showcases exceptional creativity in presenting the information about whales. It includes innovative and unique approaches that engage and captivate the viewer.	The storyboard demonstrates creativity in presenting the information about whales. It includes some unique approaches that engage the viewer.	The storyboard shows limited creativity in presenting the information about whales. It relies on common or conventional approaches, resulting in less engagement.	The storyboard lacks creativity in presenting the information about whales. It does not engage or captivate the viewer due to its unoriginal approach.

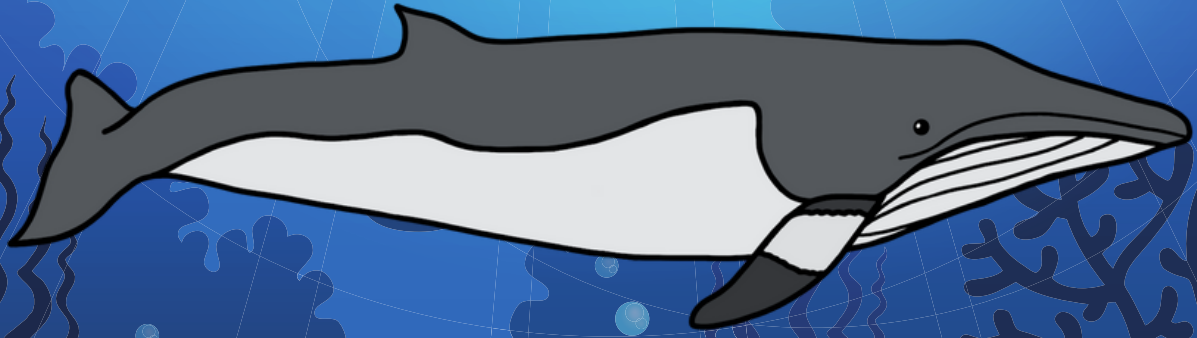
Design



1

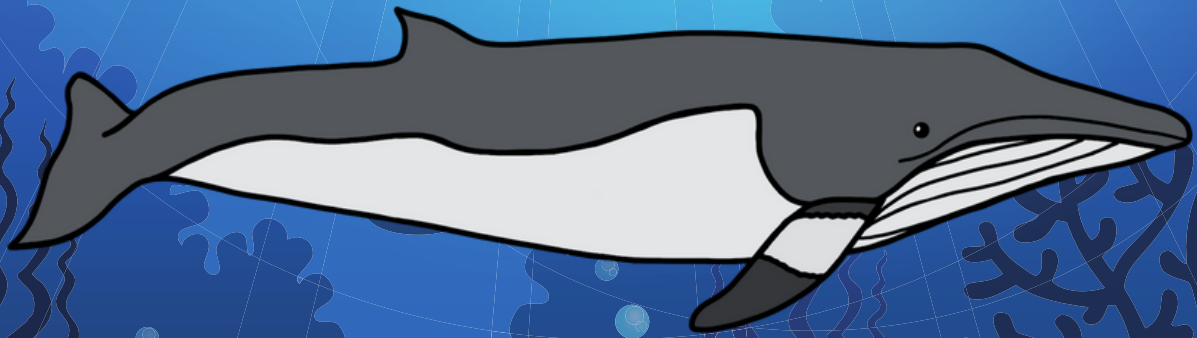
2

Design



3

4



5

6